

High Image Office Suites Available For Lease

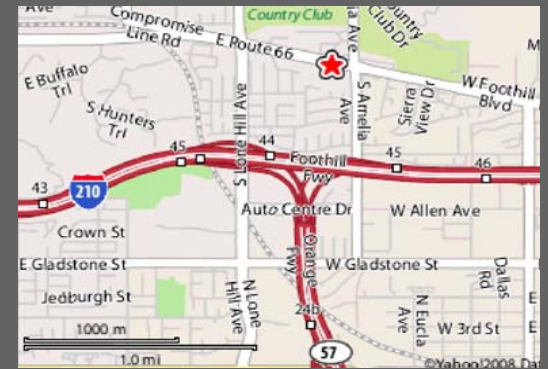
2200 - 2220 E Route 66, Glendora, CA

Enhance your business image today!



Free 7-day trip to Hawaii for two to celebrate your new lease!

- 1,000 - 8,641 SF available
- From \$1.75 to \$1.95 per square foot
- Ground floor space available
- Lighting, heating, A/C, and cleaning included.
- Excellent visibility from Route 66
- Building and monument signage
- Beautiful location nestled against the foothills
- 1/2 a mile to 210-freeway access and 3/4 of a mile to 57-freeway access
- Easy access to San Gabriel Valley and Inland Empire markets
- Four parking spaces per 1,000 square feet
- Stunning courtyard and entry
- Lobby remodel in progress
- Tenant improvements can be completed quickly



Full commission to procuring broker!

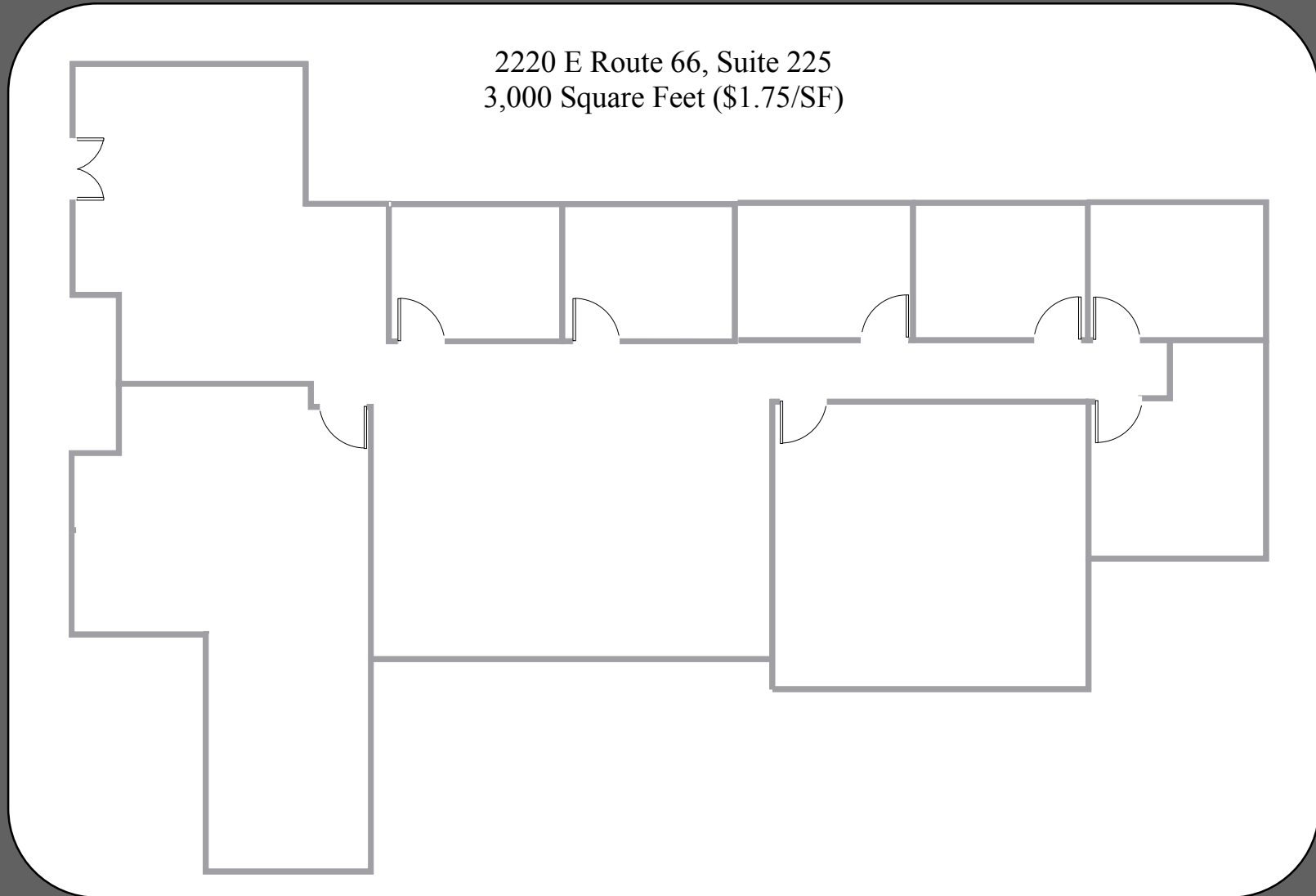


**MARTINDALE
COMMERCIAL
REAL ESTATE**

Call for a private tour! (626) 914-2755

High Image Office Suites Available For Lease

2200 - 2220 E Route 66, Glendora, CA 91740

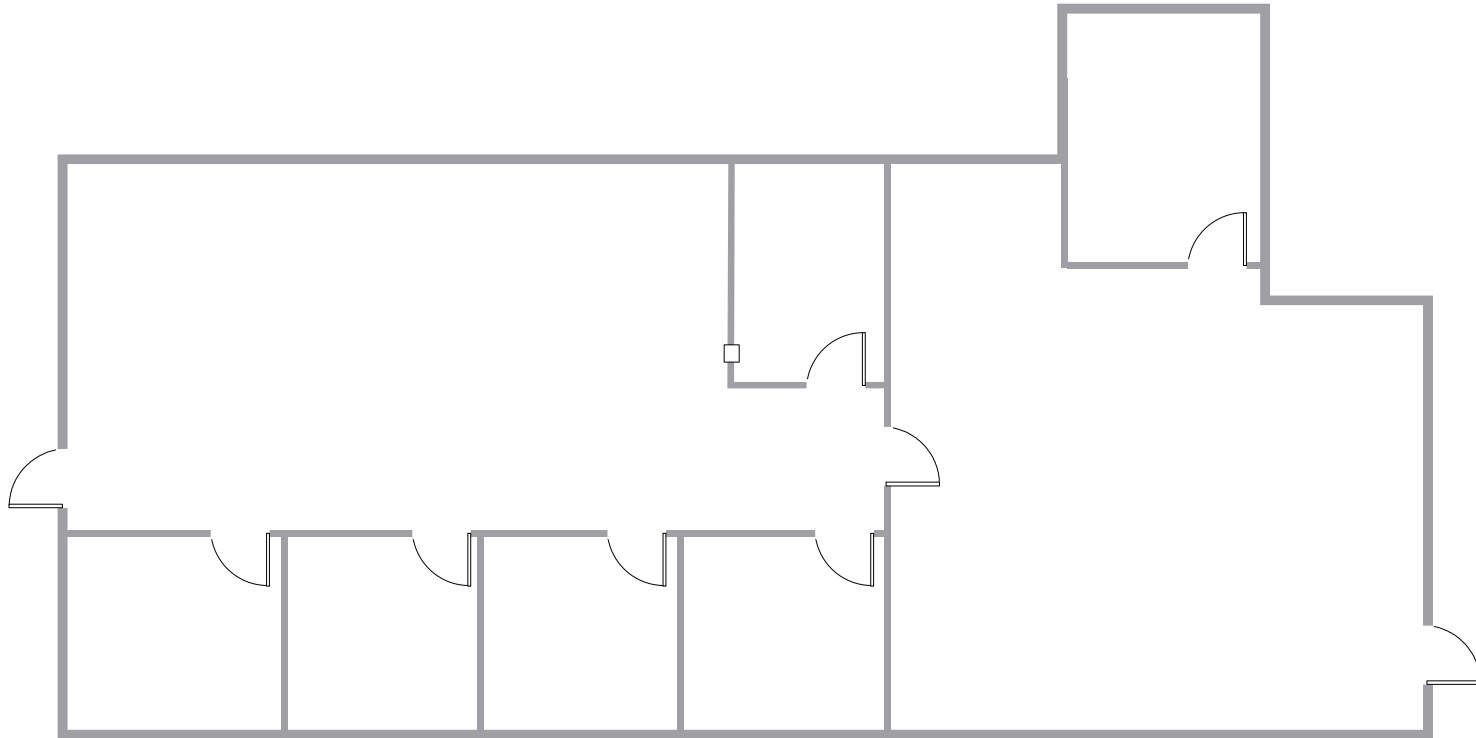


Call for Details
(626) 914-2755

High Image Office Suites Available For Lease

2200 - 2220 E Route 66, Glendora, CA 91740

2220 E Route 66, Suite 108
2,441 Square Feet (\$1.95/SF)

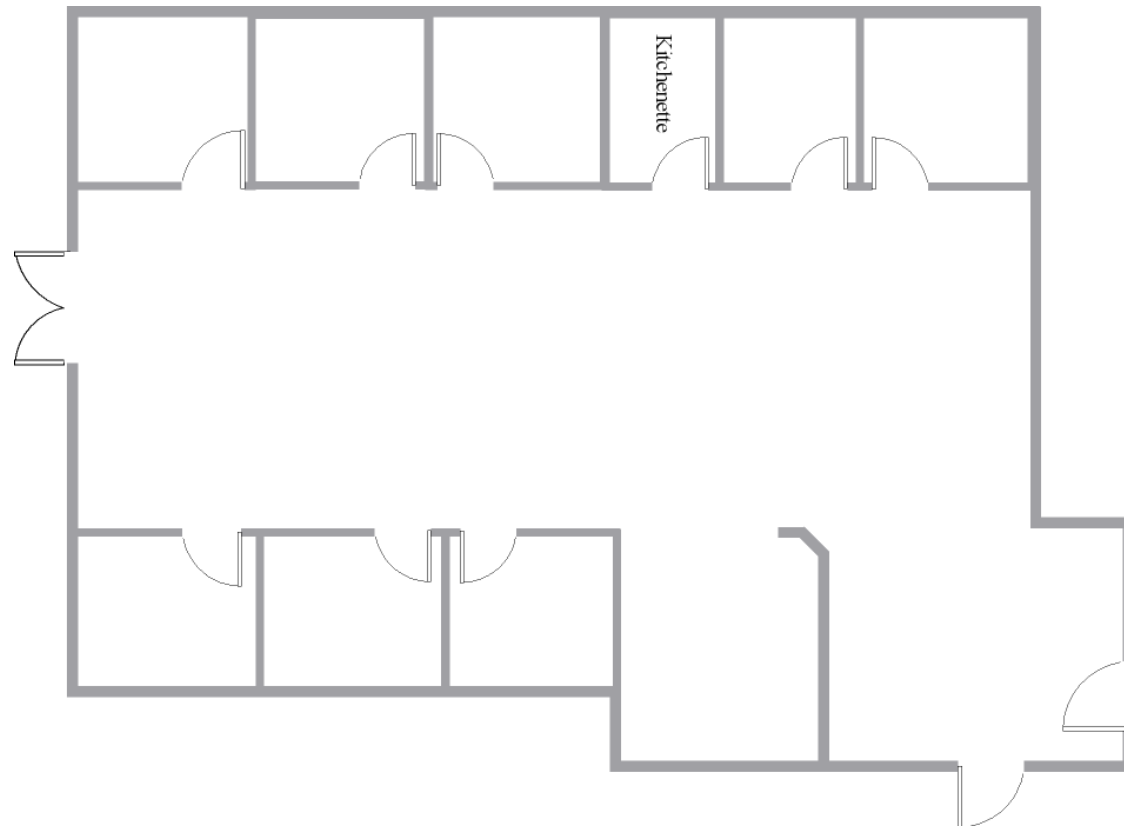


Call for Details
(626) 914-2755

High Image Office Suites Available For Lease

2200 - 2220 E Route 66, Glendora, CA 91740

2200 E Route 66, Suite 103
3,202 Square Feet (\$1.95/SF)



Call for Details
(626) 914-2755